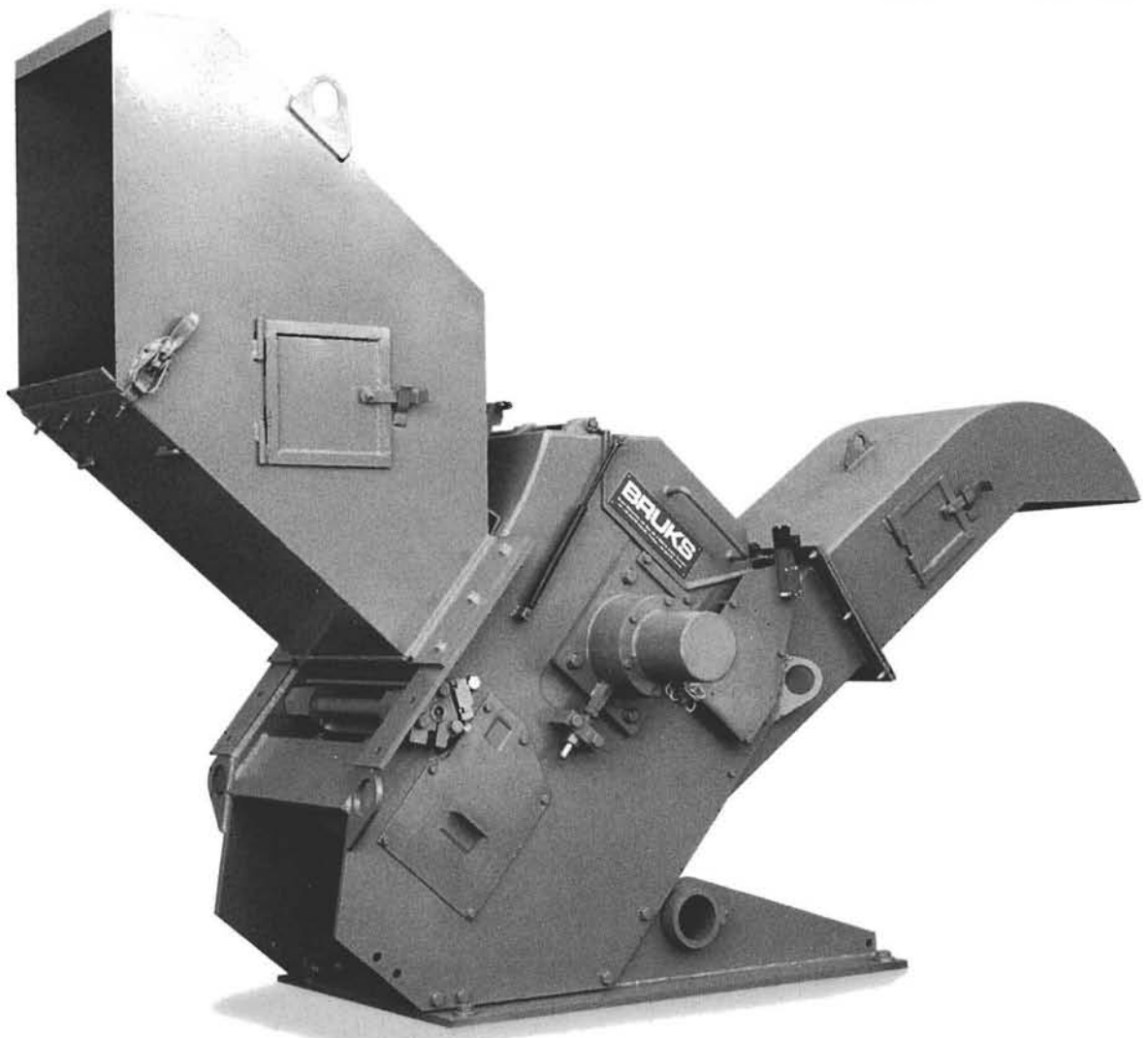


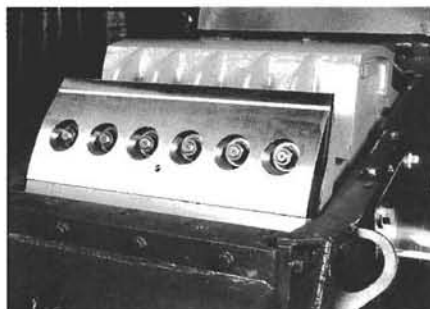
## Bruks CS Drum Chippers



**Efficient chippers for trim ends, lily pads, joinery waste, veneer, plywood etc. as well as for re-chipping.**

Gravity-fed drum chippers with optimum cutting geometry for the production of high-quality chips from short wood waste. The chip length is adjustable between 20 and 35 mm as standard. For other chip lengths there are special designs. Bruks drum chippers come in several sizes, for 10 to 300 m<sup>3</sup> chips/hr. Their quality, long life and other features give you more chips per machine hour and lower production costs.

The knife length is adjusted in the grinding room, which eliminates the need for knife adjust-



*Well-devised knife holding system for quick knife change. All parts are exchangeable.*

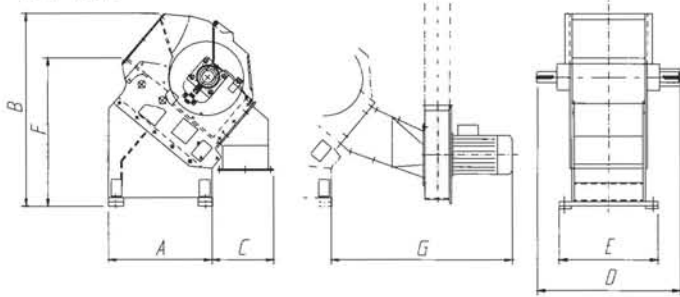
ments in the chipper. The chipper hood exposes one half of the drum. The swing-away anvil minimizes chipper damage if, e.g., metal is fed in. All parts around the

chipper knife are exchangeable, and all machine service is made easy, which cuts downtime.

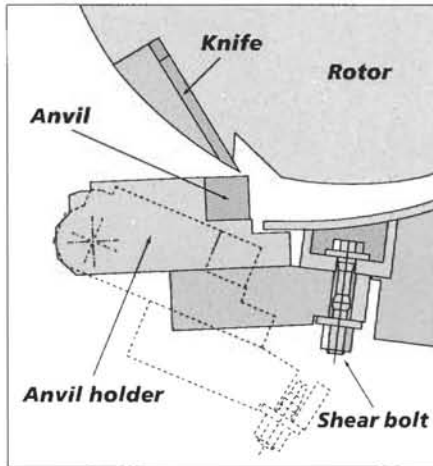
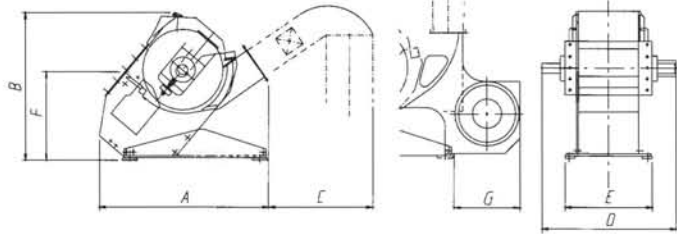
The chips are discharged through the bottom or at an upward angle, depending on chipper size. The two smallest chippers, 602 CS and 802 CS, can also be equipped with chip fans.

To eliminate oversize, the discharge opening can be fitted with a screen. Bruks CS drum chippers can also be built together with a chip screen to form a complete Chip Pac for the production of high-quality pulp chips from short wood waste.

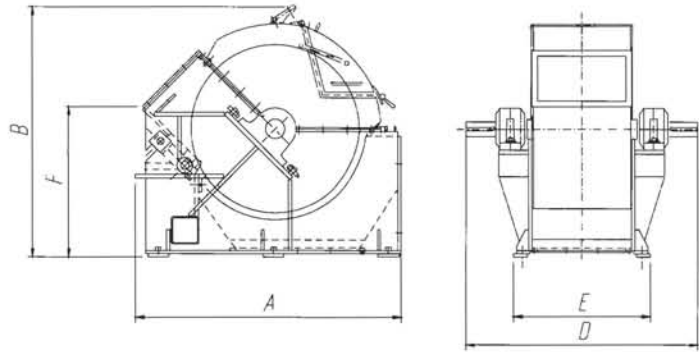
### 602 CS



### 820 CS



### 1212/1512 CS



The chippers are, as standard, fitted with a swing-away anvil holder and bolted anvil. The anvil holder has two mounting points: one pivoting and one with a shear bolt that breaks when metal is being chipped, causing the anvil holder to swing down, thus preventing serious damage to the rotor, anvil and chipper frame. (See fig.)

#### Technical Data

Machine Type	602 CS	820 CS	1212 CS	1512 CS
Capacity, m <sup>3</sup> chips/hr				
•chipper only	10-20	30-60	50-125	100-300
•in Chip Pac with screen	10-15	20-40	-	-
Chipper drum diameter, mm	600	800	1160	1500
Number of knives, standard	2	4	6	8
Infeed opening, WxH, mm	540x300	560x365	680x540	870x620
Max. solid wood thickness, mm	180/100	200/150	300	450
Chipper drum speed, rpm	870	720	525	360
Fly-wheel mass GD <sup>2</sup> , kpm <sup>2</sup>	280	400	1200	4100
Chip fan power rating, kW	11	2x7.5	-	-
Chipper motor power rating, kW	30-75	55-90	90-200	132-600
Weight, kg	1400	2400	4500	8000
Dimensions, mm				
A	830	1690	1925	2258
B	1570	1470	1820	1860
C	500	1040	-	-
D	1160	1340	1680	2020
E	800	870	990	1170
F	1210	880	1080	1040
G	1460	655	-	-

Standard chip length: 20-35 mm

The Bruks product program for chipping plants and sawmills also includes disc chippers, complete Chip Pacs, chip screens, butt-end reducers, conveyors, and mobile chipping systems.

# BRUKS

BRUKS MEKANISKA AB

P.O. Box 46, S-820 10 Arbrå, Sweden  
Tel: +46-278-64 25 00. Fax: +46-278-414 40.

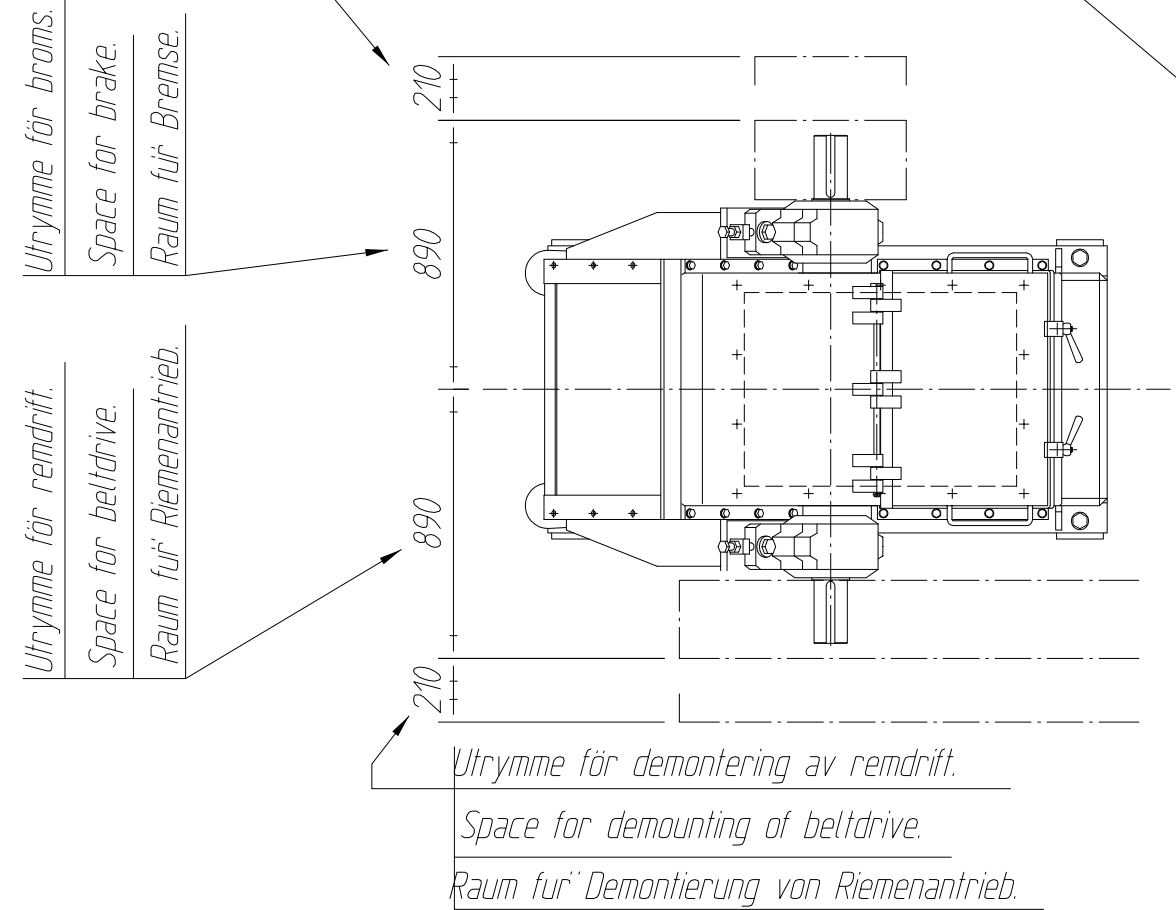
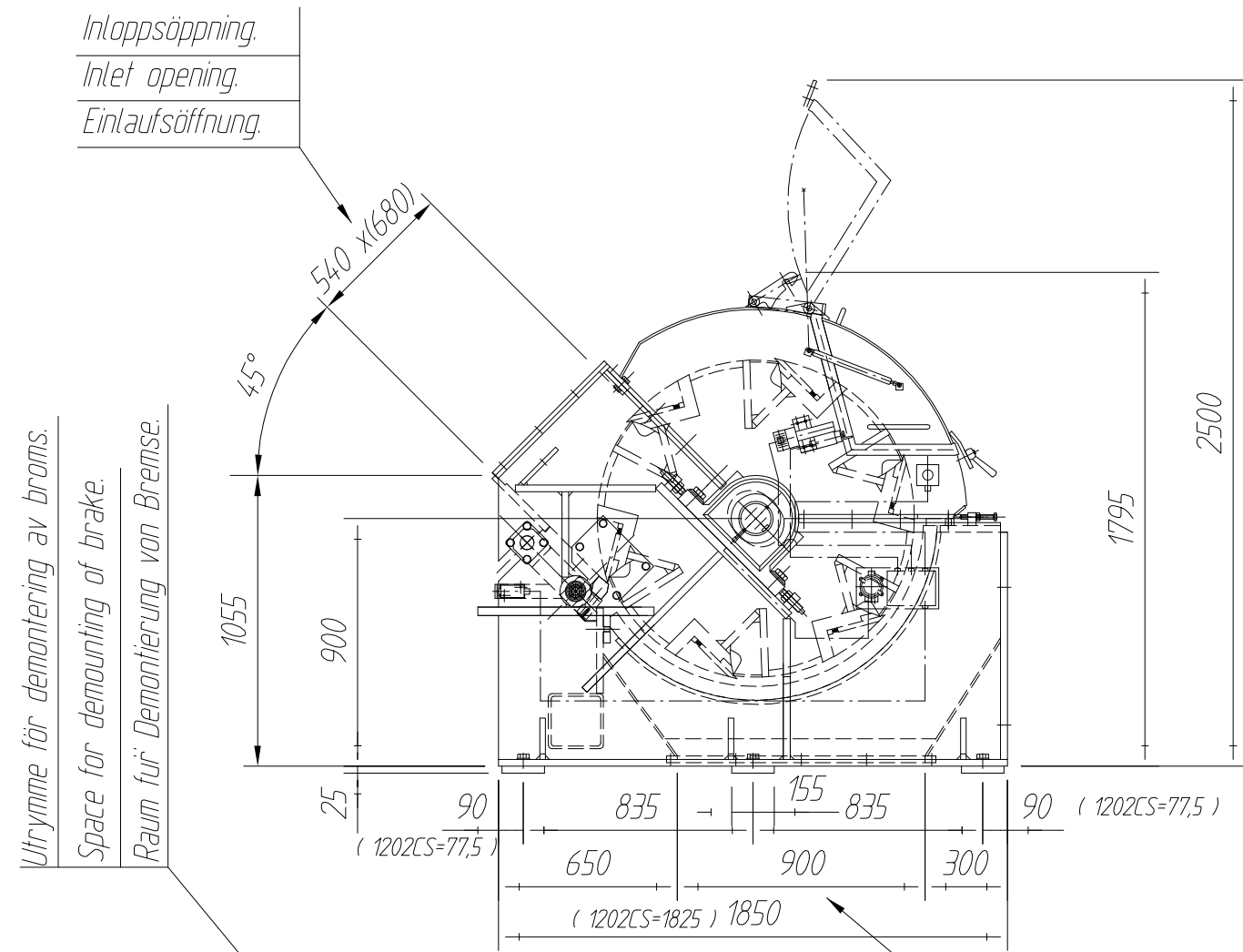
Above illustrations do not necessarily show the exact design of the products at any given time. The products have to be used in conformity with common practice and all applicable safety regulations. Specifications for products and equipment presented here can be changed without prior notice.

För ej toleranssatta mått gäller:  
 På maskinbearbetade ytor +- IT14/2  
 På ej maskinbearbetade ytor +- IT17/2



Den här ritning är utestående vår egendom och får icke obehörigen användas, kopieras, föreläsa för eller utlämnas till annan person. This drawing is our exclusive property. It may not without our explicit consent be utilized, copied, shown or given to any other party. Diese Zeichnung ist ausschliesslich unser Eigentum und darf nicht unbefugt verwendet, kopiert, vorgezeigt oder weitergegeben werden.  
 BRUKS MEKANISKA AB

Nr	Ant	Ändring	Datum	Inf.	Godk.
a		Reviderad	841207		BK
b		Rev.	880519		SE
c		Rev.	890518		KGB
d		Omritad med CAD.	931122		BLo



Utlopp.  
 Outlet.  
 Auslass.

Fundamentskrafter inkl. stativ.

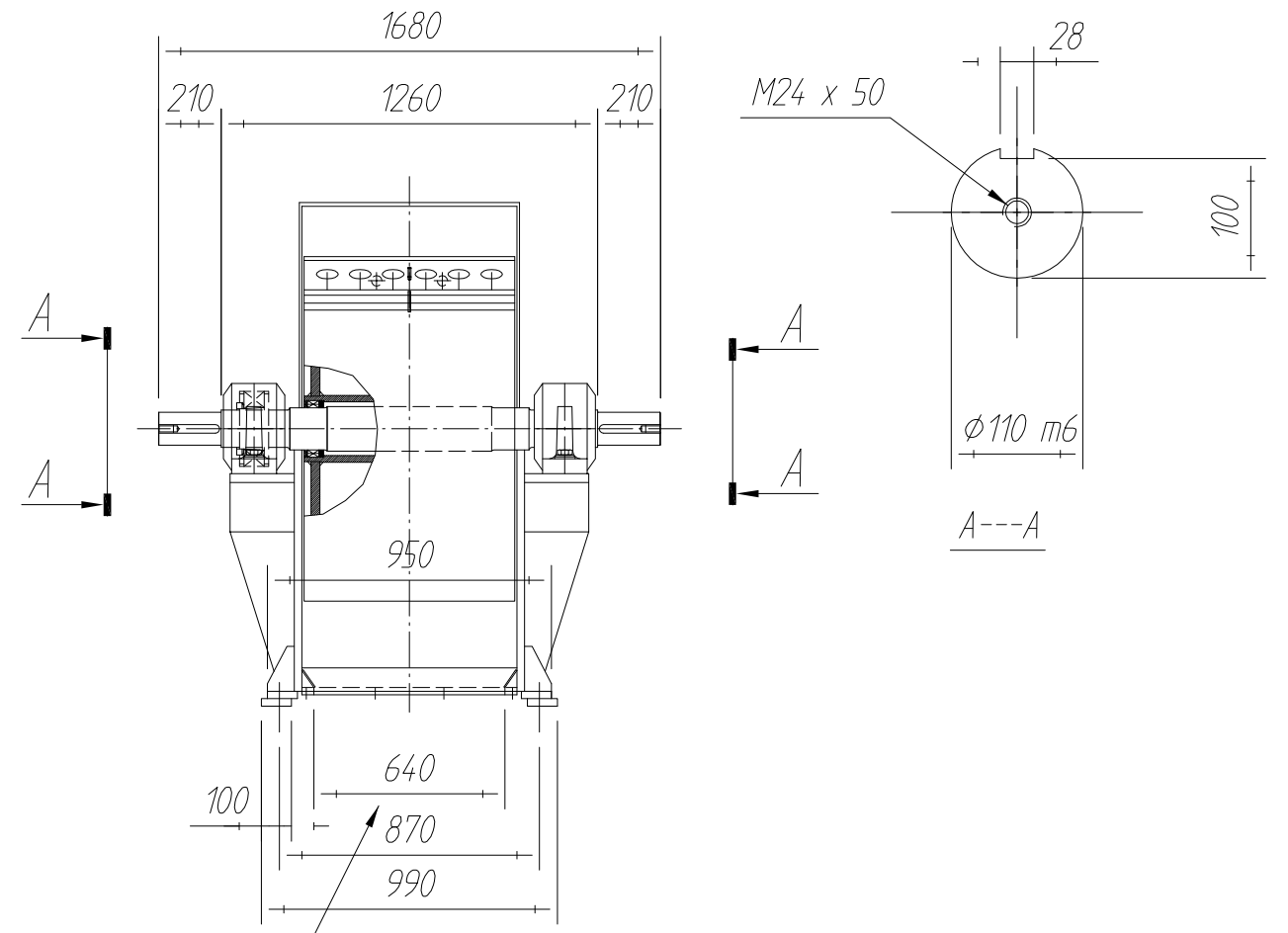
Statisk bel. 4 x 1500 kp  
 Dynamisk bel. 4 x ± 400 kp

Basal forces incl. stand.

Statical constraint 4 x 1500 kp  
 Dynamical constraint 4 x ± 400 kp

Fundamentkräften mit Stand.

Statische Belastung 4 x 1500 kp  
 Dynamische Belastung 4 x ± 400 kp



Ant.	Ant.	Det.nr	Benämning/beteckning	SIS	Art./ritn.nr
80	00		1202-1212CS med bottenutsläpp 1202-1212CS with bottom discharge 1202-1212CS mit Bodenauslass	Skala 1:25	
				Ritad BK / BLo	Dat. 81-08-28
				Konstr.	Godk.
				Ersätter	Fitnamn
				Ersatt av	Urspr.
				Ritn.nr	303266

**BRUKS**